

**INDIAN COUNCIL OF PHILOSOPHICAL RESEARCH  
DARSAHAN BHAWAN, 36, TUGHLAKABAD,  
NEW DELHI-110062**

NOTICE INVITING QUOTATIONS FOR **25 KWp** CAPACITY ROOFTOP SOLAR POWER PANEL PROJECT IN ENGINEER PROCUREMENT CONSTRUCTION (EPC) MODE AND INSTALLATION AND COMMISSIONING AND 04 YEARS AMC BEYOND INITIAL WARRANTY PERIOD OF 01 YEAR FOR DELHI OFFICE.

\*\*\*\*\*

Indian Council of Philosophical Research is an Autonomous Body fully funded by the Ministry of Human Resource Development, Government of India. The Council for rooftop solar Power Panel Project and Services, Delhi Office.

**Quotations are invited for the above services in a sealed envelope in below manner.**

The technical and financial bids should be sealed by the bidder in separate envelopes duly super-scribed and both the sealed envelopes are to be put in a bigger envelope which should also be sealed and duly super-scribed. Commercial bids of only technically qualified bidders will be considered. Certificate by an independent architect for work compliance as per specification.

Quotations are invited for the following services in a sealed envelope by 05.00 p.m. on 19<sup>th</sup> February 2020 and may be forwarded to the Director (A&F), Indian Council of Philosophical Research, Darshan Bhawan, 36 Tughlakabad, Institutional Area, Near Batra Hospital, M.B. Road, New Delhi-110062 by Registered post or deposit by hand in tender box placed at Security guard room at ICPR, New Delhi. The advertisement in this regard has also been published in the website of the Council [www.icpr.in](http://www.icpr.in) The detailed requirement is as per enclosures.

The following documents should be enclosed with commercial quotations:

- a) Commercial bid clearly indicating taxes with acceptance terms and conditions of tender.
- b) Company profile and registration details with copy of relevant documents.
- c) Copy of last three years Income Tax Return and Pan Card.
- d) Past order copies from any Govt. organization, references etc.

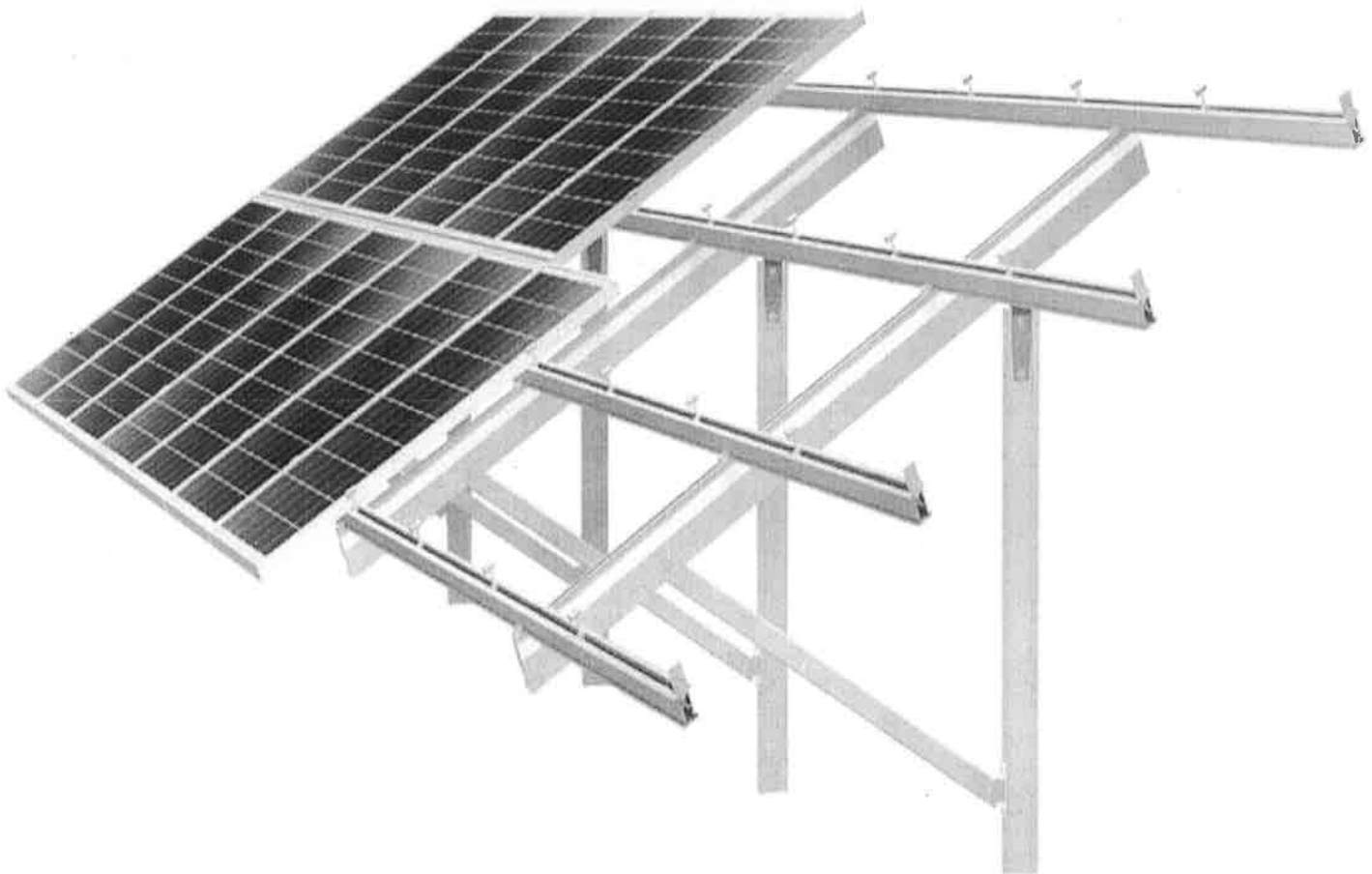
  
(Lt. Cdr. Pawan Deep)  
Director (A&F)

S.No.	Structure	Specifications
1	Plant Capacity	25 KWp Grid connected Rooftop Solar Power Plant
2	Location	INDIAN COUNCIL OF PHILOSOPHICAL RESEARCH 36, TUGHLAKABAD INSTITUTIONAL AREA M.B. ROAD, (NEAR BATRA HOSPITAL) NEW DELHI- 110062
3	Structure	Fixed Structure for concrete Roof
4	Solar Module	≥300 Wp, Poly Crystalline
5	<u>Module Mounting Structure</u>	Annexure No.1 (enclosed)
6	Back feed controller/Zero Grid Export Device	The accuracy of better than +/- 5%
7	<u>Cabling</u>  i Solar Cables from Module to Inverter ii AC cabling from inverter to ACDB panels iii Cables from Inverter to ACDB panel to feeding point iv Cable from inverter to ACDB panel to feeding point	1C X4sq.mmXLPEInnsulatyed Cu cables. Suitable for outdoor and for 1100 VDC application. PVC insulated copper cable. PVC/XLPE insulated Al armoured cable. 4C X35 sq.mm XLPE insulated Cu, armoured cable.
8	<u>Metering &amp; Grid Connection</u>  AC Distribution boxes	Dust and waterproof and made of thermo plastic/GI. Metering devices to calculate the total energy generation from the plant. Arrangement for its disconnection from main LT panel of building at 415 V @ 50Hz.
9	Earthing System	As per the IS3043 G.I. earthing(3mtr depth) for module structure G.I. earthing(3mtr depth) for lighting arrester G.I. earthing(3mtr depth) for electrical equipment's of SPV plant.
10	Lighting Protection	Copper lighting arrester, properly earthed by Cu/Al earthing, as per IS3043
11	<u>Tentative Bill of Material (BOM)</u> BOM 25 KW Rooftop SPV Plant	Annexure No. 2(enclosed)
12	EMD	50,000/-in from of DD, FDR,BC- Upto 45 days from bid validity date
	PBG	1,00,000/- in from of DD,FDR,BC- Upto 60 days from completion of initial warranty period
	Duration	60 days from date of issuance of work order
13	Payment terms	50% payment on delivery of material as per final BOM. 40% payment on installation commission 10% payment, 30 within days after commissioning date on receipt of agreement for warranty and AMC period.
14	L 1Determination Criteria	Composite L1 including original work and 4 years AMC beyond initial warranty period of 01 year.

**Annexure No. 1**

Structure	Material	Foundation	Max. load wind	Salient features
MS Galvanized Structure	Frame sections: MS Galvanized Structure as per IS-2062-1999, IS-2629-1998 Connections: Galvanized steel Fasteners: MS Galvanized	Concrete Foundations	150 kmph	High reliability Clamps approved for use with

Technical Specification – Module Mounting Structures	
Material	Material
Overall dimension	As per final design
Coating	Hot dip Galvanized
Wind rating	It is designed for wind speeds of 150 kmph. Structure is designed as per IS875 Part 3, IS800 and IS801.
Tilt angle & Facing	25 degree true south facing
Fixing type	SS 304 fasteners
Weight	As per final design
Configuration	As per final design



**Annexure No. 2****Tentative BOM 25 KW Rooftop SPV Plant**

<b>Sr.</b>	<b>Material</b>	<b>Specifications</b>	<b>Make</b>	<b>Unit</b>	<b>Qty.</b>
I	Solar module	335 Wp, Poly Crystalline (High Efficiency)	Goldi One, vikram or equivalent reputed make	Nos.	75
ii	Grid inverter	a) string inverter 25KW with b) On line communication	Solis/Delta reputed Schneider or equivalent make	Nos.	1
iii	Module structure	Hot Dip Galvanized Structure	Reputed make	Set	1
iv	ACDB Panel	AC Distribution Board Customaries	Reputed make	Nos.	1
v	cables from modules to inverters	1C x 4Sq.mm Solar cable copper, black	Lapp/ Polycab or Reputed make	Mtr.	100*
vi	cables from inverter to ACDB Panel cables ACDB Panel to feeding point	3.5C x 50 Sq.mm XLPE insulated armored Aluminium cable* (As per Design)	Polycab/Havells or reputed make	Mtr	30*
vii	Earthing,	Chemical Earthing	Reputed make	Nos.	3
viii	Lightening Arrestor	ESE Type	Reputed make	Nos.	1
ix	Connecters	PVC (+ive & -ive)	Reputed make	Nos.	30
x	Miscellaneous items	<ul style="list-style-type: none"><li>• Conduit</li><li>• cable trays,</li><li>• Module Cleaning Tools etc.</li></ul>	Reputed make	Set	1
xi	Export Device	Zero Grid Export Device	Reputed make	Nos.	1